

Suction blowers

-the way to sound crops

It is well-known that quick action is required to maintain the quality of the freshly harvested crop. Immediately after combining, the crop must be taken to the farm for drying and storage. The final yield is dependent on quick and efficient crop processing

The conveying system must be designed to ensure quick, gentle and rational grain handling. The Kongskilde suction blowers offer the most versatile conveying system on the market for all free-flowing types of grain and seed irrespective of volume.

A multi-versatile conveying system. Efficient in the field. Indispensable on the farm.

The suction blower performs an efficient job in the field as well as on the farm. It sucks the grain heaps or pits and blows it direct into the silo or on-floor store. Emptying is accomplished with equal ease and efficiency.

The perfect solution for all conveying jobs on the farm or as an efficient

supplement to an existing conveying system.

The high-performance blower, combined with the simple and flexible OK pipe system, will fit in anywhere, irrespective of building facilities.

Suction blower and OK pipe system - the ideal combination

The simple OK pipe system carries the air flow in any disired direction, and the quick-release couplings allow easy installation of both temporary and permanent pipelines.



Easy to handle. Simple to adjust

Conveying capacities

In pneumatic conveying the capacity depends on the type of material to be conveyed, the piping layout, and the length.

In the examples the conveying capacities apply to wheat with a specific gravity of 750 kg/m³, a moisture content of 15% and a content of 1% impurities.

The capacities refer to different piping layouts and to different conveying distances. The conveying distance is the total length of all horizontal and vertical piping on the suction and the pressure side. The length of the suction hose is included, but bends and suction head are not taken into account.

If a long suction head is used, the conveying distance must be increased by 1.5 m. For each extension there will be a further increase of 0.65 m.

Five special suction heads

The suction blower can be used with different types of suction heads to suit any specific conveying job:

- Long suction head
- Round suction head
- Suction head for cleaning
- Universal suction head
- Short suction head

The system may be easily adjusted during operation to ensure maximum efficiency.

Conveying capacities in wheat (t/h)

Suction pipeline

One universal suction head
One 2 m steel flexible suction hose

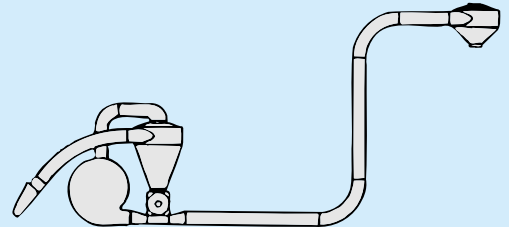
Pressure pipeline

A number of metres of horizontal piping
4 m vertical piping
Two 90° bends
One outlet cyclone

Conveying distance

(m)	10	20	30	40	50	60	80	100	120	150	200
SUC 100	6,8	6,0	5,2	4,6	4,0	3,5	2,7	2,0	1,5	0,8	
SUC 150	11,5	10,3	9,3	8,4	7,6	6,9	5,7	4,8	4,0	3,0	
SUC 200	14,7	13,3	12,0	11,0	10,0	9,2	7,8	6,7	5,7	4,6	3,1
SUC 300	19,6	17,7	16,0	14,6	13,3	12,3	10,5	9,0	7,8	6,4	4,7
SUC 500	31,8	28,9	26,5	24,4	22,6	21,0	18,3	16,1	14,3	12,2	9,5
SUC 700	42,1	38,6	35,5	32,9	30,6	28,6	25,1	22,4	20,1	17,3	13,9
SUC 1000*	61,0	56,0	51,5	47,7	44,4	41,5	36,4	32,5	29,1	25,1	20,2

*) Special round suction head. The capacity is only valid for short suction way.



Conveying capacities in wheat (t/h)

Suction pipeline

One vertical universal suction head
One 90° bend
2 m horizontal piping

Pressure pipeline

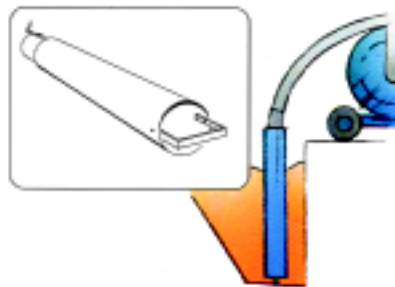
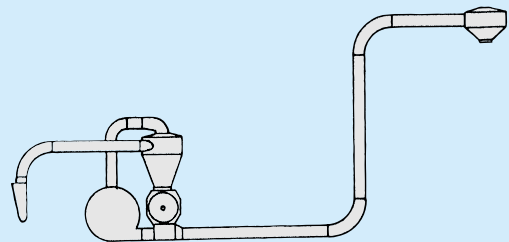
A number of metres of horizontal piping
4 m vertical piping
Two 90° bends
One outlet cyclone

Conveying distance

(m)	10	20	30	40	50	60	80	100	120	150	200
SUC 100	7,1	6,2	5,4	4,7	4,1	3,6	2,7	2,0	1,5	0,8	
SUC 150	12,1	10,7	9,6	8,6	7,8	7,0	5,8	4,8	4,0	3,0	
SUC 200	15,7	13,9	12,5	11,2	10,1	9,1	7,5	6,2	5,2	3,9	
SUC 300	20,4	18,2	16,4	14,9	13,6	12,5	10,6	9,1	7,9	6,4	4,7
SUC 500	33,2	30,1	27,4	25,1	23,1	21,4	18,6	16,3	14,4	12,2	9,5
SUC 700	44,2	40,3	36,9	34,0	31,5	29,3	25,6	22,7	20,3	17,4	13,9
SUC 1000*	64,0	58,4	53,5	49,3	45,7	42,5	37,1	32,9	29,4	25,2	20,2

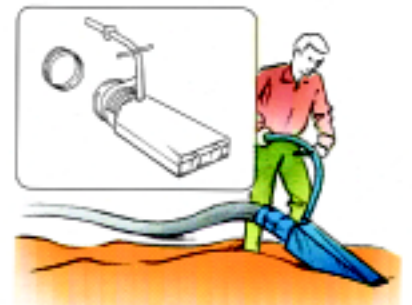
*) Special round suction head. The capacity is only valid for short suction way.

The examples given are only intended as a guide as other factors may affect the capacity.



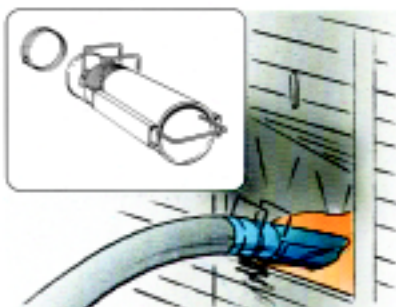
Long suction head

For suction from deep grain pits. May be extended by 65 cm sections. High conveying capacity.



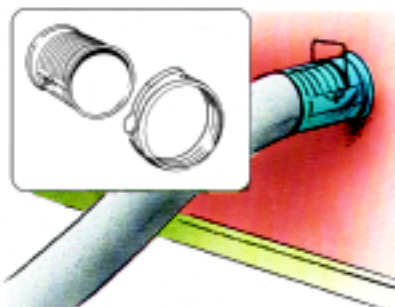
Universal suction head

The most versatile head, suitable for most jobs. Superior conveying performance. The handle is detachable.



Round suction head

For fixed suction - e.g. through an outlet in the silo wall. Also suited for suction from grain heaps.



Short suction head

For suction through an OK 160 pipe stub from truck or silo. Requires a shutter if the grain can escape freely.



Suction head for cleaning purposes

For suction of any residual grain from the floor. Slightly lower conveying capacity. Equipped with wheels and swivel link between suction head and hose.

Trailer-mounted suction blowers type SUC-TR

The trailer version with loading equipment is the most versatile conveying system on the market. Mounted on a two-wheel trailer the SUC-TR blower may be coupled direct to the tractor, and is therefore extremely mobile.

The blower is driven by the p.t.o. shaft of the tractor.

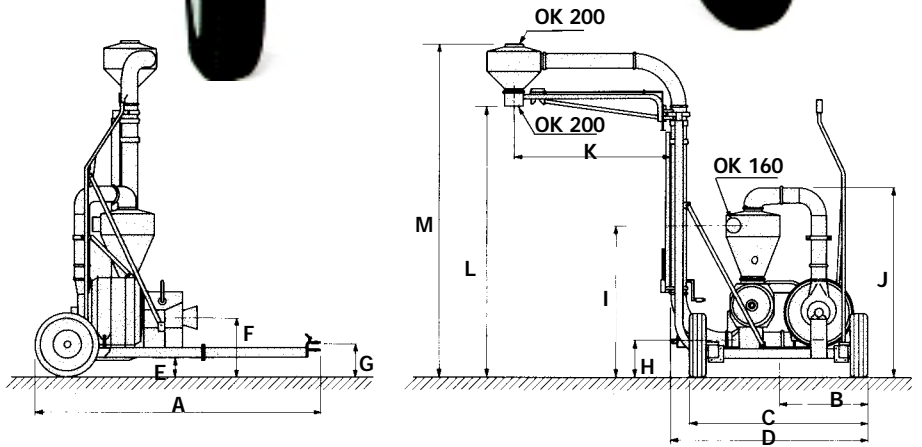
Ideally suited for loading of trucks direct from field, on-floor stores, or silos - all in one operation, and for many other jobs where a flexible, high-performance conveying system is needed.

The SUC-TR models are available in four different sizes with capacities of up to 64 t/h.



SUC-TR	500*	500**	700**	1000**
A	2960	2885	3030	3310
B	840	945	945	-
C	1920	1920	1920	2350
D	2100	2100	2100	2460
E	315	315	315	320
F	840	740	740	800
G	460	460	460	470
H	520	520	520	530
I	1715	1715	1715	2350
J	2130	2130	2130	2780
K	1690	1690	1690	2090
L (min/max)	2870/3840	2985/4395	3010/4420	
M (min/max)	3620/4590	3635/5045	3660/5070	

SUC 500/700/1000 TR: If the wheel arms are inverted the blower will be lowered by approx. 110 mm.
 *) 540 rpm. **) 1000 rpm.



Technical data	SUC 500 TR		SUC 700 TR	SUC 1000 TR
P.t.o. shaft, rmp	540	1.000	1.000	1.000
Required power p.t.o., kW/HP	48/65	48/65	62/85	90/120
Weight, (kg)	820	730	770	1050
Air flow rate, approx, m ³ /h	2,000	2,000	2,000	2,000
Max. air velocity, grain conveying, approx. m/s	25	25	25	25
Conveying pipes, type	OK/OKR	OK/OKR	OK/OKR	OK/OKR
Conveying pipes, diameter, mm	160	160	160	160
P.t.o. shaft, dimensions (tractor)	1 3/8"	1 3/8"	1 3/8"	1 3/8"
	6	21	21	21
	splines	splines	splines	splines



**The blowers move mountains
-at up to 64 t/h**

For more than 25 years our suction blowers have proved themselves worldwide - and moved mountains of grain.

Conveying up to 64 t/h the suction blowers are extremely efficient. However, conveying delicate crops or grain over long distances will result in a capacity reduction.

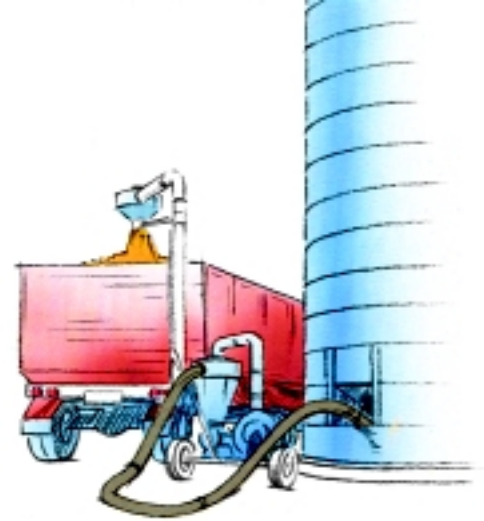
11 different models

Three versions of the suction blower are produced, offering a total of 11 models, to meet any requirement for indoor and outdoor pneumatic crop conveying. Tractor or electrically powered.

The following pages give a brief description of the wide product range and of the variety of suction heads required to provide an efficient and flexible conveying system.

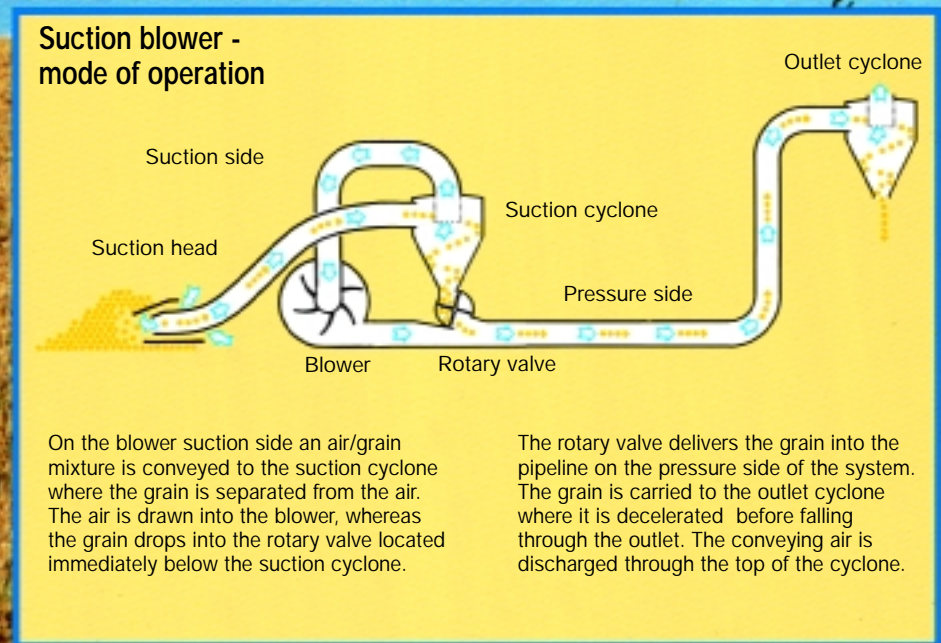
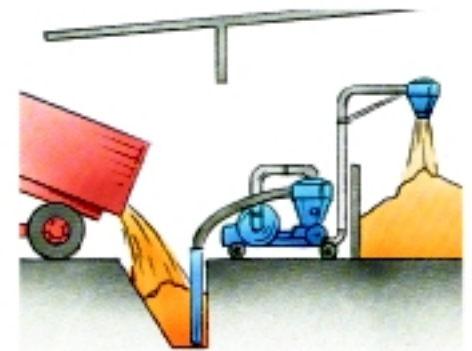
Consult the distributor

On the basis of an existing conveying system, building facilities, and crop



mix, our distributor will assist in selecting a conveying solution that will meet specific capacity and economic requirements.

Crops can be moved - horizontally and vertically - from various collecting points to different destinations, as required by the user. It is only necessary to place the suction head in the grain heap - the suction blower will do the rest.



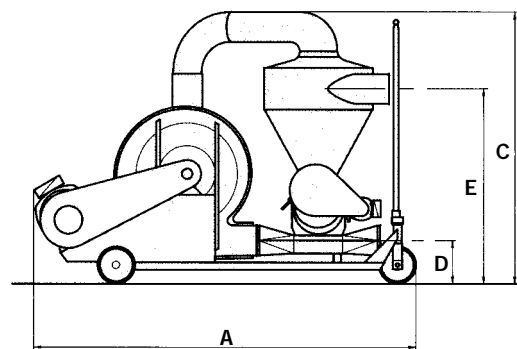
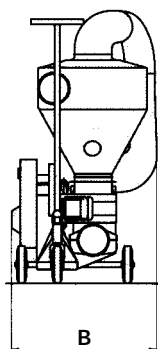
Elect. powered suction blowers type SUC-E

The electrically powered suction blowers are particularly suitable for permanent installations. They are ideal for types of indoor and outdoor pneumatic conveying jobs. The SUC-E models are provided with wheels and can easily be moved from one job to another.

Five SUC-E models are available to suit any specific crop volume. The smallest model has a 7.5 kW (10 HP) and the largest model a 37 kW (50 HP) motor offering conveying capacities of up to 33 t/h.



SUC-E	100	150	200	300	500
A	2040	2050	2050	2090	2235
B	775	775	775	1075	913
C	1460	1460	1460	1550	1820
D	230	230	230	313	308
E	1040	1040	1040	1150	1418



Technical data	SUC 100 E	SUC 150 E	SUC 200 E	SUC 300 E	SUC 500 E
Motor output (blower), kW/HP	7.5/10	11/15	15/20	22/30	37/50
Motor output (rotary valve), kW/HP	0.37/0.5	0.37/0.5	0.37/0.5	1.1/1.5	1.5/2.0
Mains voltage, V/Hz	3x380/50	3x380/50	3x380/50	3x380/50	3x380/50
Amperage, A	16	22	30	44	73
Min. fuse A (recommended)	25	35	35	63	100
Motor (blower), rpm	3,000	3,000	3,000	3,000	3,000
Motor (rotary valve), rpm	1,500	1,500	1,500	1,500	1,500
Motor type	Foot-mounted standard motor IEC-DIN				
Weight incl. of motor, kg	210	243	285	477	668
Weight excl. of motor, kg	145	145	145	278	378
Air flow rate, approx. m ³ /h	1,800	1,800	1,800	1,800	2,000
Max. air velocity, grain conveying, approx. m/s	25	25	25	25	25
Conveying pipes, diameter, mm	160	160	160	160	160
Conveying pipes, type	OK/OKR	OK/OKR	OK/OKR	OK/OKR	OK/OKR
Control box with automatic star-delta switch*	yes	yes	yes	yes	yes

The above data applies to a mains voltage of 3x380 V/50Hz. Suction blowers for different mains voltages available upon request.

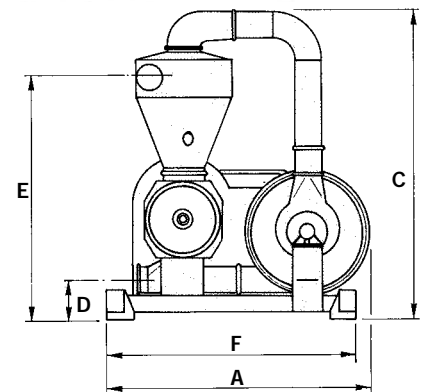
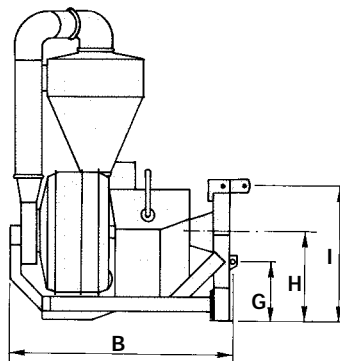
*(blowers with motor only)

Tractor-powered suction blowers type SUC-T

Carried on the lift arms of the tractor this version is p.t.o. driven. Consequently, no separate power source is required, and the blower can easily be transported from one job to another. The SUC-T types are available in two sizes, with conveying capacities of up to 33 t/h.



SUC-T	300	500
A	1650	1580
B	1355	1360
C	1440	1900
D	175	265
E	1035	1460
F	-	1500
G	515	360
H	670	570
I	995	820



Technical data	SUC 300 T	SUC 500 T
P.t.o. shaft, rpm	540	540
Required power p.t.o., kW/HP	34/45	48/65
Weight, kg	350	595
Air flow rate, approx. m ³ /h	1,800	2,000
Max. air velocity, grain conveying, approx. m/s	25	25
Conveying pipes, type	OK/OKR	OK/OKR
Conveying pipes, diameter, mm	160	160
P.t.o. shaft, dimensions (tractor)	1 3/8" 6 splines	1 3/8" 6 splines